



June 12, 2017

Main Street Monday!

We had a great visit in Paducah planning for the Fall Conference which takes place October 17-20. You can make your reservation at Lake Barkley now! Tell them you are with KY Main Street for the best rate. More info soon!



No more boxes! Well at least not in the KYMS office. You can even sit in the chairs! This week we move to the library/reference area to begin filling the filing cabinets.

Former Miss America, Heather French Henry, celebrated 225 years in Maysville at the Uncorked Wine Festival with Main Street director, Caroline Reece and Mayor, David Cartmell. They also had 225 flags in town!!



Manchester is looking to become a Network community, they came to meet with Bardstow and KYMS last week.



Jesslyn, Daniel, RaShae, Lisanna, & Brian

WEBINAR THIS WEDNESDAY

Measuring Walking and Walkability — Data, mapping tools and assessments help to make the case for walkable communities and healthy, inclusive cities. America Walks is hosting a free webinar, "Tracking the Walking Path," on June 14 at 2 p.m. ET.

Register Today ▶ <https://register.gotowebinar.com/>

Here is a great activity to duplicate in your community! I first saw a rock as the Danville Brass Band Festival and thought “well that’s kinda cool”, then visiting with Lianne in Bardstown she asked if I had heard about it, so.....it encourages creativity, gets individuals and families downtown and they are sharing your Main St program with others. You can also tweet about it a KY_MainStreet



The backside of this had their FB page to be uploaded too.



Did you happen to notice in last week’s National Main Street newsletter that the cover photo was from Covington and they included Nick Wade’s (Danville director) article he wrote to his local newspaper, the Advocate.

The "Nelson County Rocks" movement has taken over downtown Bardstown, with people of all ages hunting and hiding rocks. The group is intended to spread beauty and kindness in our community - it encourages people to paint, hide and post photos on the groups Facebook page (which currently has over 7,600 members). It has definitely made an economic impact in our community with families eating and shopping downtown. Facebook page – Nelson County Rocks



Rachel got the perfect tag for her nametag at the National Conference. The Beer Cheese Festival in Winchester this week-end was a huge success!



Sign painting in Lawrenceburg in case you are looking for a painter.



Robert Wood Johnson Foundation

Call for Proposals:

Grants of Up to \$100,000 Available for HIA

Grants of Up to \$100,000 Available for HIA

Call for Proposals:

We're awarding at least four grants of up to \$100,000 to support health impact assessment efforts in select counties in 14 states. For more details, register for our webinar June 20 at 2 p.m. ET.

PEW Charitable Trusts just released a Call for Proposals to do Health Impact Studies (HIAs). The grants are for work in select counties in select states.

See http://www.pewtrusts.org/en/projects/health-impact-project/about/funding-opportunities?hd&utm_campaign=2017-06-07+HIP&utm_medium=email&utm_source=Pew for details and the application.

This Call for Proposals will support at least four, two-year grants for amounts up to \$100,000 each.

Timeline

Online application system opens: July 2017. Refer to the Health Impact Project [Funding Opportunities](#) page for updates.

Regional HIA workshops: July and August 2017.

Proposals due: To be submitted via the online application system by 8 p.m. ET, September 15, 2017.

Applicant site visits: October and November 2017.

Notification of award: December 2017.

Grants awarded and projects start: January 2018.

Grants conclude: Health impact assessment reports completed by June 2019. Monitoring and evaluation continue until the grant end date of December 2019.

Goals

The goals of this funding opportunity are to: 1) Support the use of health impact assessment (HIA) to improve health where it is shaped—in families, neighborhoods, schools, and jobs; and 2) Build the capacity of organizations to conduct HIA to bring both health evidence and community voice to decisions made in sectors outside of health care.

This Call for Proposals (CFP) is focused on addressing the social and economic factors that contribute to health, including education, employment, family and social support, and community safety. These factors can be affected by decisions in a range of sectors such as housing, transportation, criminal justice, community development, and others. The CFP will support grants for health impact assessments that address health in **one or more specific counties** located in the following states (and listed in *Appendix A: Places of Interest*): **Alabama, Arkansas, California, Florida, Georgia, Kentucky, Louisiana, Mississippi, New Mexico, North Carolina, South Carolina, Tennessee, Texas, and West Virginia.**

Scenes and Signs from Western KY



This new business, Curls and Crème had a line out the door! Apparently it is the only one between KY and Savannah, GA It is quite good, but be prepared for a wait. They are currently open on Thursday, Friday, & Saturday.

Maybe someday they'll have a sign like Ferrells' Hamburgers.



Did you know about the navigable rivers? You can see them and learn more this fall in Paducah.



Public art in a vacant lot. :)



Who is the Cultural Heritage Tourist?

Research by Louis Harris, Inc., Decima research, the Travel Industry of America, Mandala Research, LLC, the U.S. Department of Commerce, and the National Trust for Historic Preservation tells us that today's cultural heritage tourist is likely to have an advanced degree. Education level is the single most significant factor that influences cultural and heritage participation and travel.

He or she is older. Participation in cultural and heritage events peaks between the ages of 45-65, when people are at the height of their careers, earning power, and discretionary income.

Females Rule: Women typically plan family vacations and group trips, and also control more personal discretionary income.

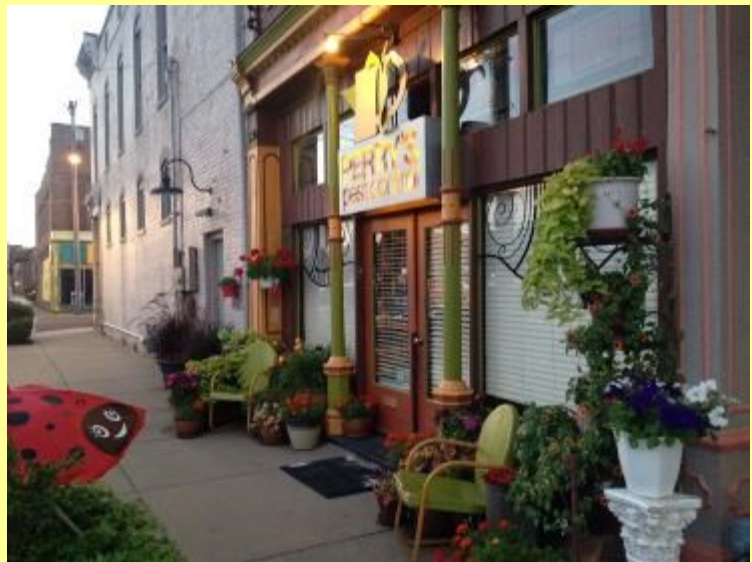
Cultural Heritage Tourists travel farther, and more frequently. Half of those surveyed indicated that recent trips were 500 or more miles, and more than a third had traveled between 100-300 miles for a day trip.

They are more likely to have engaged in international travel. They have high expectations for quality and service, they are generous spenders, they are more inclined to stay longer, they want ease and accessibility, and they want an authentic experience. 65% seek experiences where the destination, its buildings, and surroundings retain their historic character.

They are also more likely than other kinds of travelers to sample artisan food/wine, visit farmers markets, shop for gourmet foods, and participate in a fine dining experience.



A colorful scene along the streets of Marion this weekend. Love their streetlights!



Perry's Pest Control in downtown Paducah had great décor!



Superman Festival in Metropolis, Illinois only minutes from Paducah.

Their schedule sign was something to replicate. It made it very easy to see what and when events were taking place during the day.

Tropical Lemonside Mango Lemonside Watermelon Lemonside Strawberry-Orange
 Blue-Raspberry ALSO AVAILABLE IN DIET Orange
 3 DIFFERENT FUNNEL CAKES

1. Original	11. Red Velvet	21. Caramel Cheesecake
2. Strawberry	12. Maple Bacon	22. Chocolate Caramel
3. Chocolate	13. Chocolate Maple Bacon	23. Sprinkles
4. Caramel	14. Strawberry/Chocolate	24. Caramel Pecan
5. Cheesecake	15. M&M's	25. Rocky Road
6. Snickers	16. Caramel Apple	26. Chocolate Pecan
7. Turtle	17. Cinnamon Sugar	27. Cream Cheese
8. Oreo	18. Apple Cinnamon	28. Marshmallow
9. Reese's	19. Strawberry Cheesecake	29. Chocolate Marshmallow
10. Birthday Cake	20. Chocolate Cheesecake	30. Whip Cream

DEEP FRIED OREO cookies DEEP FRIED Chips Ahoy! cookies

Who knew this was even possible?



The beautiful art deco courthouse in downtown Princeton. You will get to see it during our fall conference.



Looking for latitude and longitude for you building inventory? Use this link to find them!

<http://www.latlong.net/convert-address-to-lat-long.html>

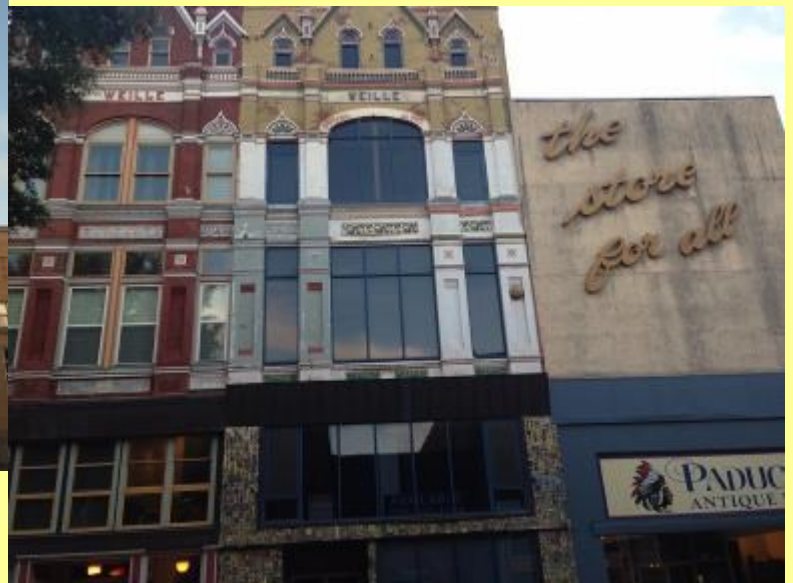
Thanks Melinda!

It's always interesting to look at the Sanborn maps of communities or perhaps your office building or home. Sanborns are now available on line and are very helpful when doing survey work, National Register work, and for researching your historic downtown. If you visit the history museum in downtown Cynthiana you can see a 3-D replica of their town made by a local resident with mat board. It is very cool!

RESEARCH: Primary Sources



- Frame is yellow
- Pink is brick
- Blue is stone
- Brown is fire proof (concrete)



Additional sites from Paducah